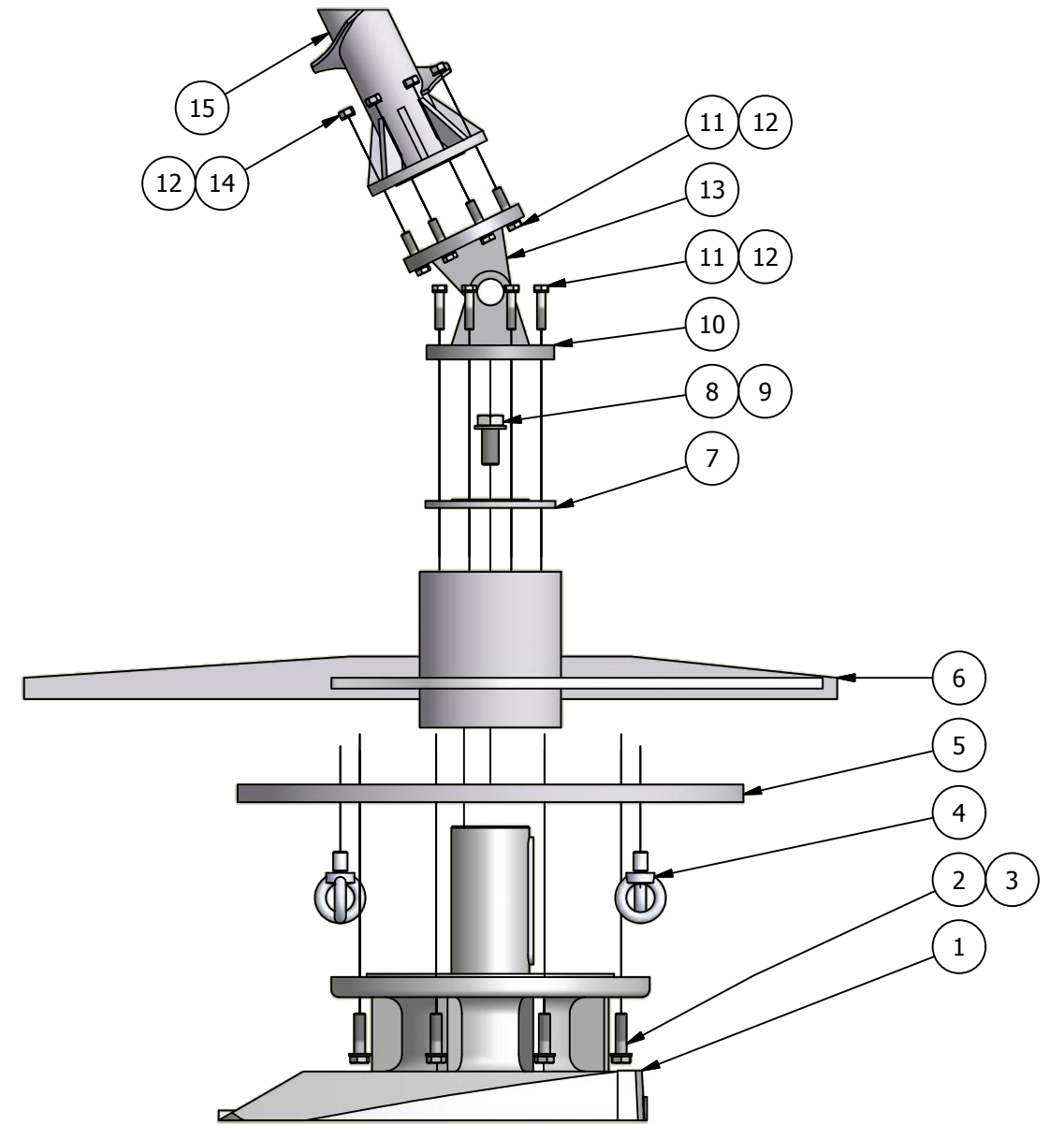
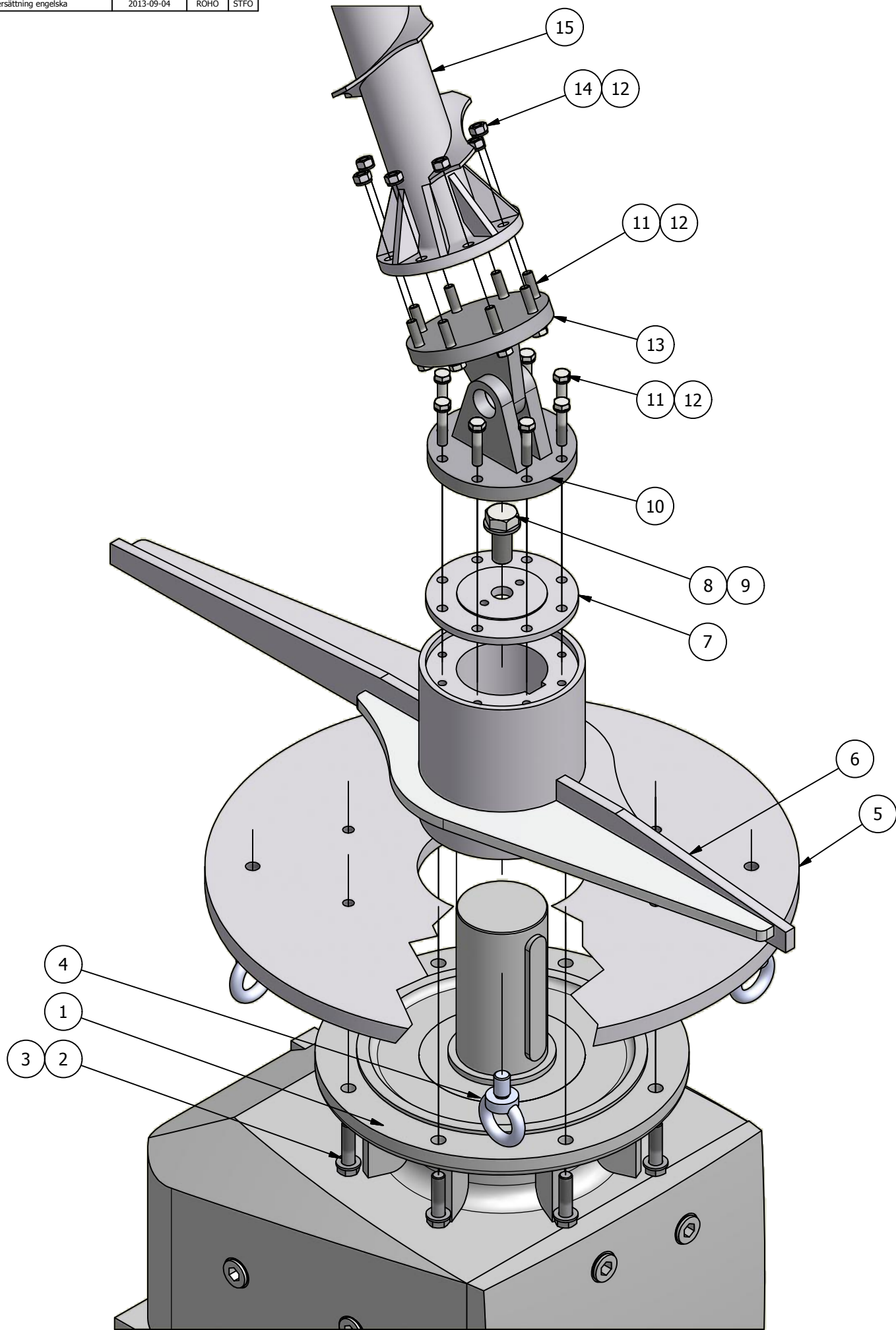


Nr	Ant	Ändring	Datum	Inf.	Godk
B		Motorplatta utbytt, extra lyftöra	2013-03-28	ROHO	STFO
C		Översättning engelska	2013-09-04	ROHO	STFO



15	1	Valvbrytningsskruv	1012039				148,1
14	8	Mutter	934-15	M6M 12 - A4		A4	0
13	1	Kardanled	1012882			S235	4,9
12	24	Bricka	125-14	BRB 10,5x20x2 - 140 HV		Fzv	0
11	16	Sextantskruv	931-111	M6S 12x55 - 8.8		Fzv	0,1
10	1	Kardanled	1012881			S235	6
9	1	Bricka	125-21	BRB 25x44x4 - 140 HV		Fzv	0
8	1	Sextantskruv	931-218	M6S 24x55 - 8.8		Fzv	0,3
7	1	Låsbricka	1012869			S235	2,1
6	1	Valvbrytningsrotor	1012878				51,9
5	1	Motorplatta	1013016			S235	69,3
4	4	Lyftögleskruv	1007489	DIN580 - M20		Fzv	0,4
3	8	Bricka	125-17	BRB 17x30x3 - 140 HV		Fzv	0
2	8	Sextantskruv	931-147	M6S 16x60 - 8.8		Fzv	0,1
1	1	Kuggväxelmotor	1012896	SK93F-132 M/4		Generic	163,4
Ite	Qty	Denomination	Part/Drw no	Model or dimension	Lengh	Material	Mass

This drawing remains the property of Tomal AB. Unauthorized use is prohibited according to applicable law.							Mass
TOMAL METERING SYSTEMS Tomal AB / S-31165 Vessigebro / Sweden Tel: +46 (0)346 713100 / Fax: +46 (0)346 713139 www.tomal.se							450 kg
Silo Ø4500, Kona 65° Valvbrytarrotor inkl kardanled Monteringsritning							Sheet/No sheets 1 / 1
Design by ROHO	Approved by STFO	Sheet format A3	Scale 1:10	Replaces	Date 2013-03-20	Project no 1012888	Rev C

Released